

Auto-Chlor[®]

SYSTEM

A5 *WaterSaver*[™]

Single Rack • Corner • Low Energy Dishmachine

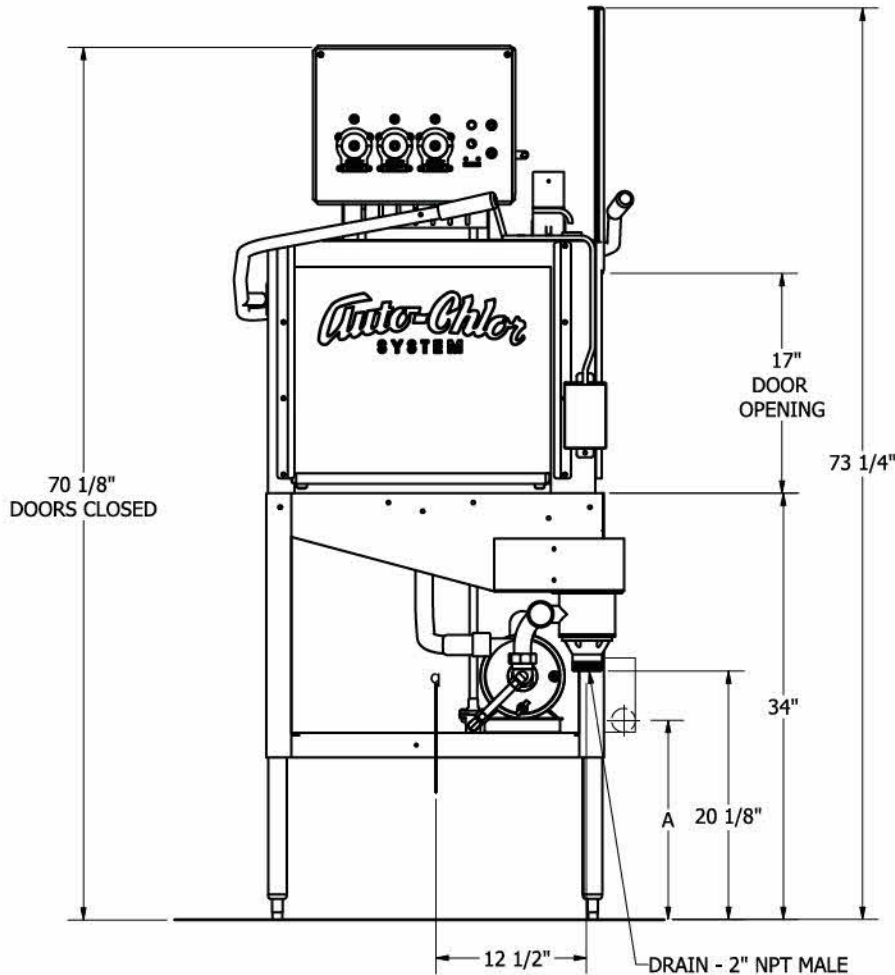


WaterSaver[™]

- ◆ ***Lowest Water Usage***
1.09 gal/cycle
- ◆ ***Low Energy***
- ◆ ***Durable Construction***
- ◆ ***Simple Maintenance***
- ◆ ***Routine Service***
- ◆ ***37 Racks Per Hour***
Capacity

Total Service.
Total Satisfaction.
For more information, visit us
at www.auto-chlor.com





A: OPTIONAL SCRAP ACCUMULATOR DRAIN HEIGHT 15 1/2"

Installation Specifications

Hot Water Inlet - 1/2" NPT Female

45 gallons per hour @ 140°F, 7 GPM
(recommended water temperature)

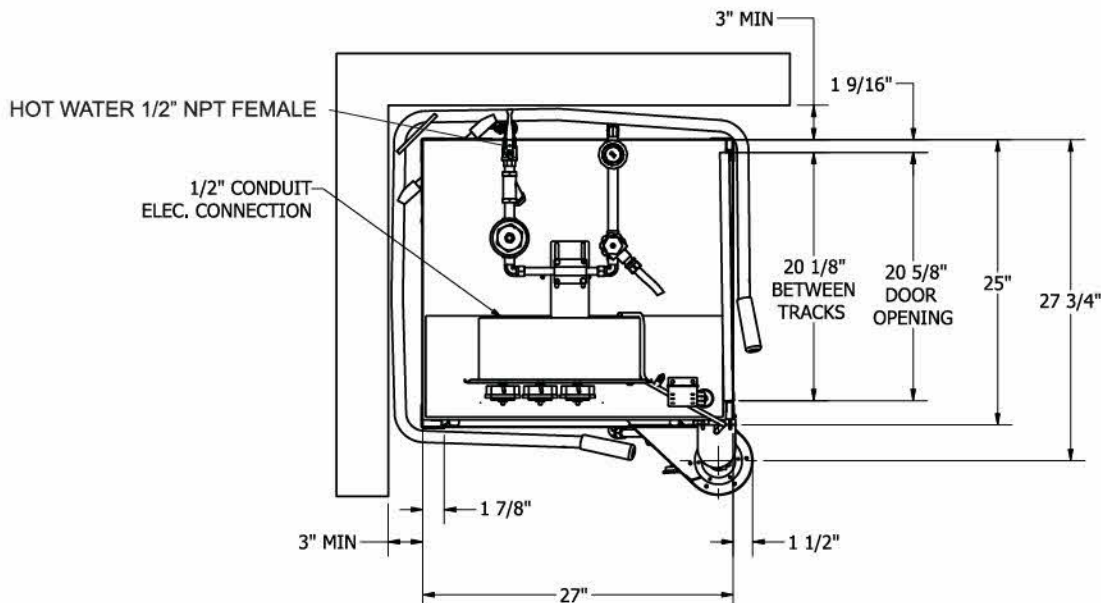
Electrical Requirement
115 VAC, 60Hz, 1 Ph, 20 A

Table Height at Machine Entrance - 34"

Drain Connection with Scrap
Accumulator - 2" NPT

Drain Connection without Scrap
Accumulator - 2" NPT

NOTE: This unit does not produce
steam or heat



**Total Service.
Total Satisfaction.**